

Taking away the chaos: the case for Scotland to implement the UK's first drug consumption room

PHINS, 13th September 2019

Dr Saket Priyadarshi, AMD Alcohol and Drugs

Stuart Notman, Programme Manager

Glasgow HSCP/GG&C Alcohol and Drug Services

Acknowledgement

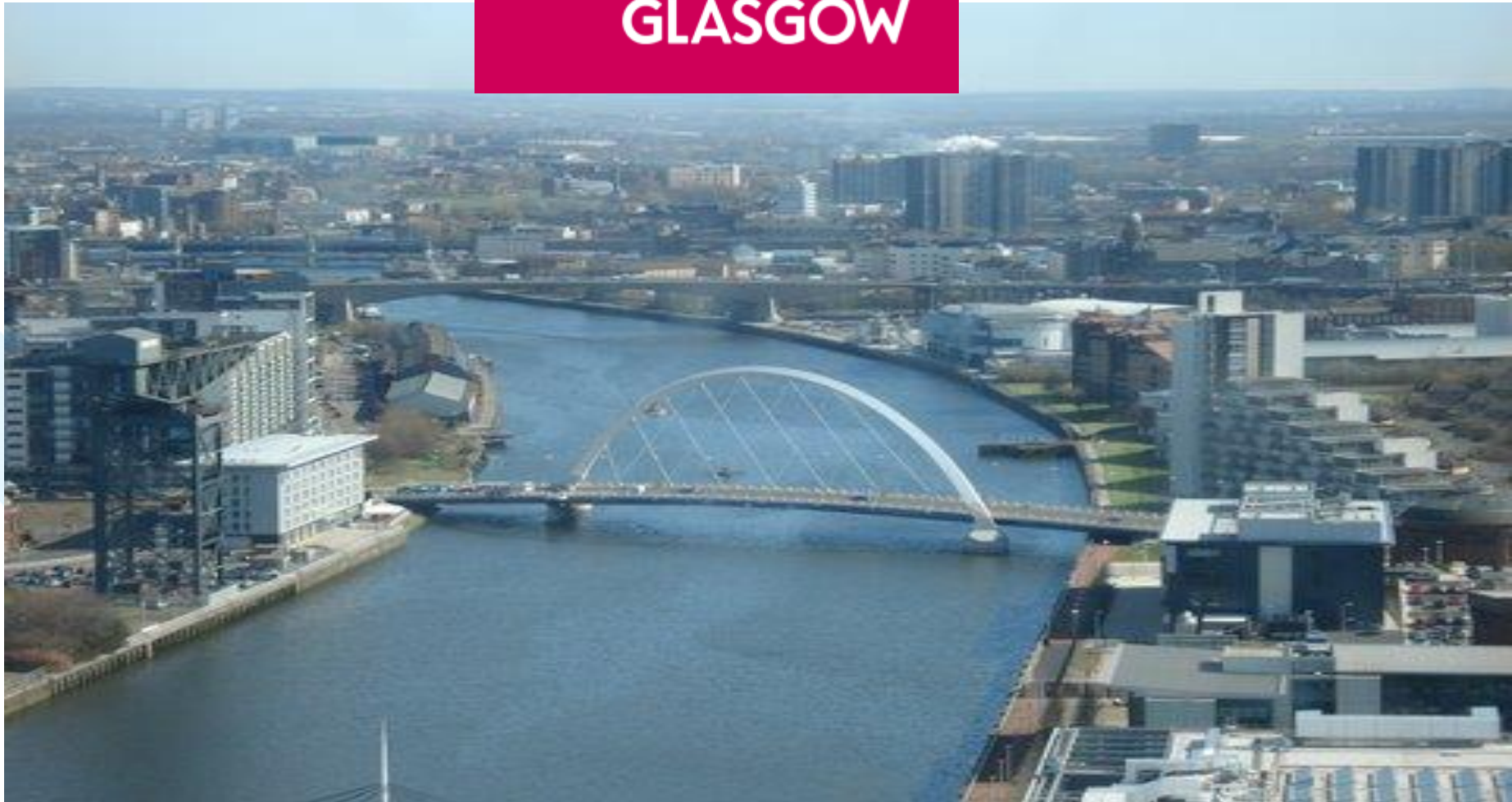
- *Mark Rodgers, Management Trainee*
- *Dr Emily Tweed, Higher Trainee, Public Health*
- *Dr Emilia Crighton, Deputy Director Public Health, NHS GG&C*
- *Glasgow ADP & HSCP*
- *SDCF/HAT Short Life Working Group*
- *HIV Incident Management Team*
- *EMCDDA*
- *Prof Sir John Strang*
- *Drs Rebecca Metcalfe, Tony Martin, Erica Peters*

Overview



1. Background to Glasgow Proposals:
'Taking away the chaos' report
2. Safer Drug Consumption Facilities
(SDCF/SIFs/DCRs)
3. Current status

**PEOPLE
MAKE
GLASGOW**





Background

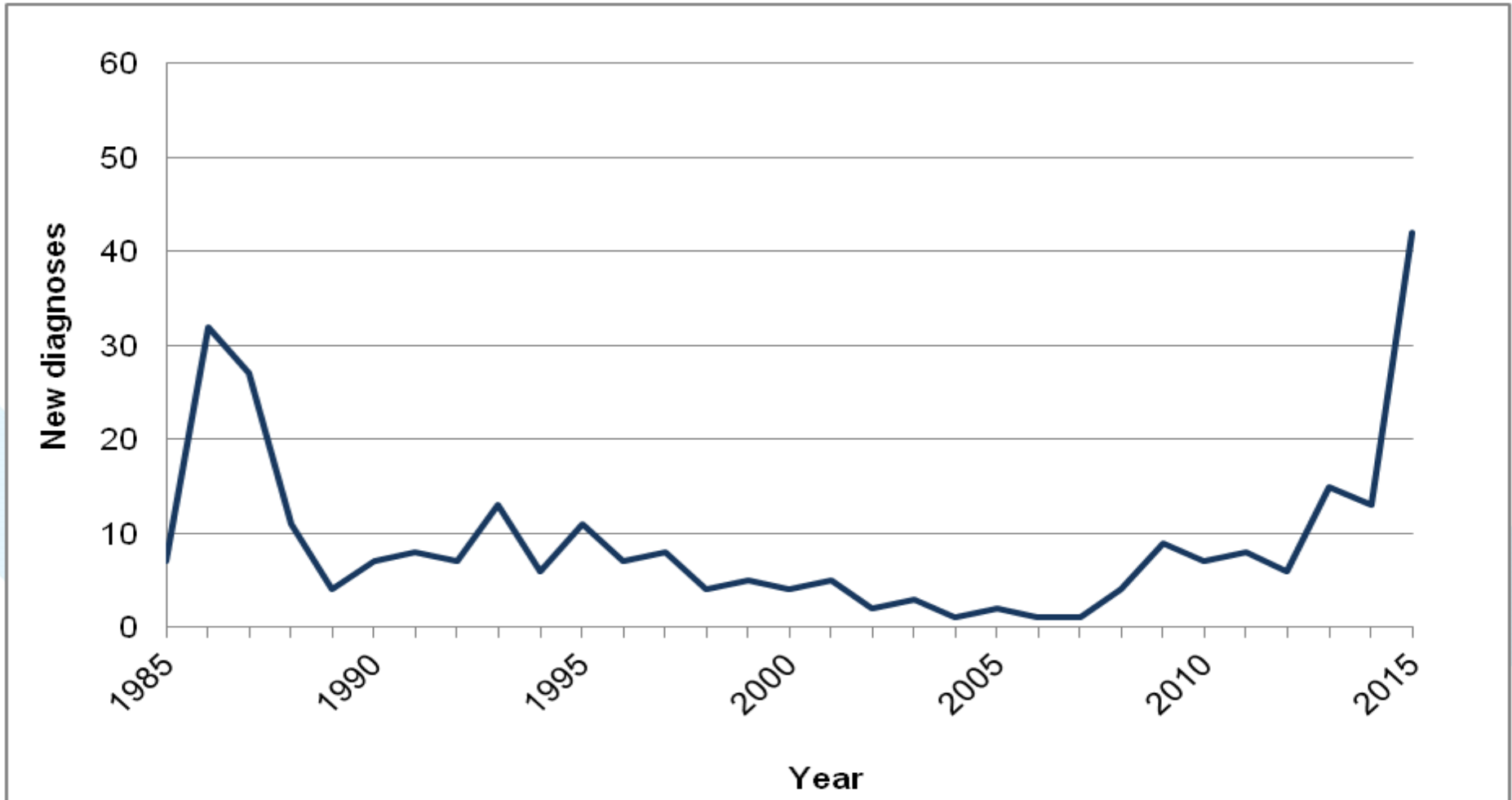


- Botulism, 2014-15
- Anthrax, 2009-10
- Clostridium novyi, 2000

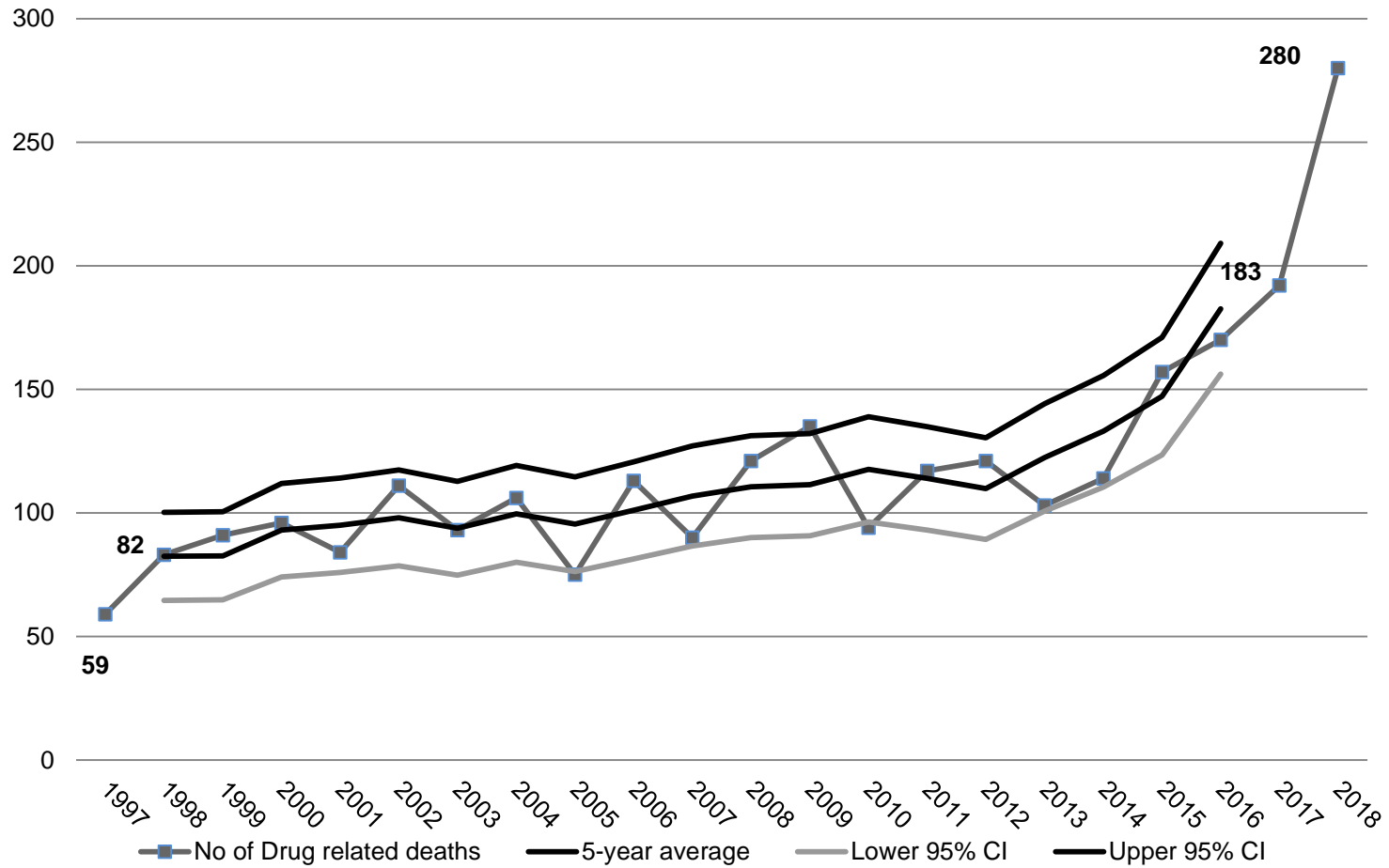
- Rising Drug-related deaths

- Community/Business concerns

HIV in PWID Glasgow City 1985-2015



Drug-related deaths in Glasgow City 1997-2018



“Taking away the chaos”

**The health needs of people who inject drugs
in public places in Glasgow city centre**



Methods



Local data

**Evidence
review**

Consultation

Prevalence & demographics



Few reliable data on size of population but 400-500

Predominantly:

- Male
- Scottish origin
- Aged 30-50

Multiple and complex needs (SMD):

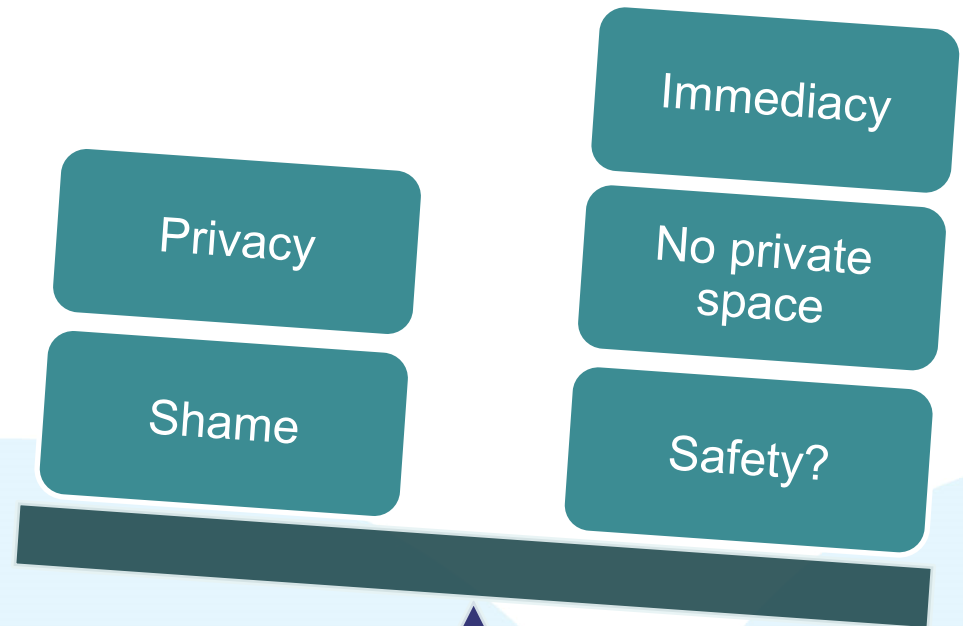
- Homelessness
- Recent incarceration
- Destitution

Why inject in public?

“If I was rattling [withdrawing] I’d go anywhere.”

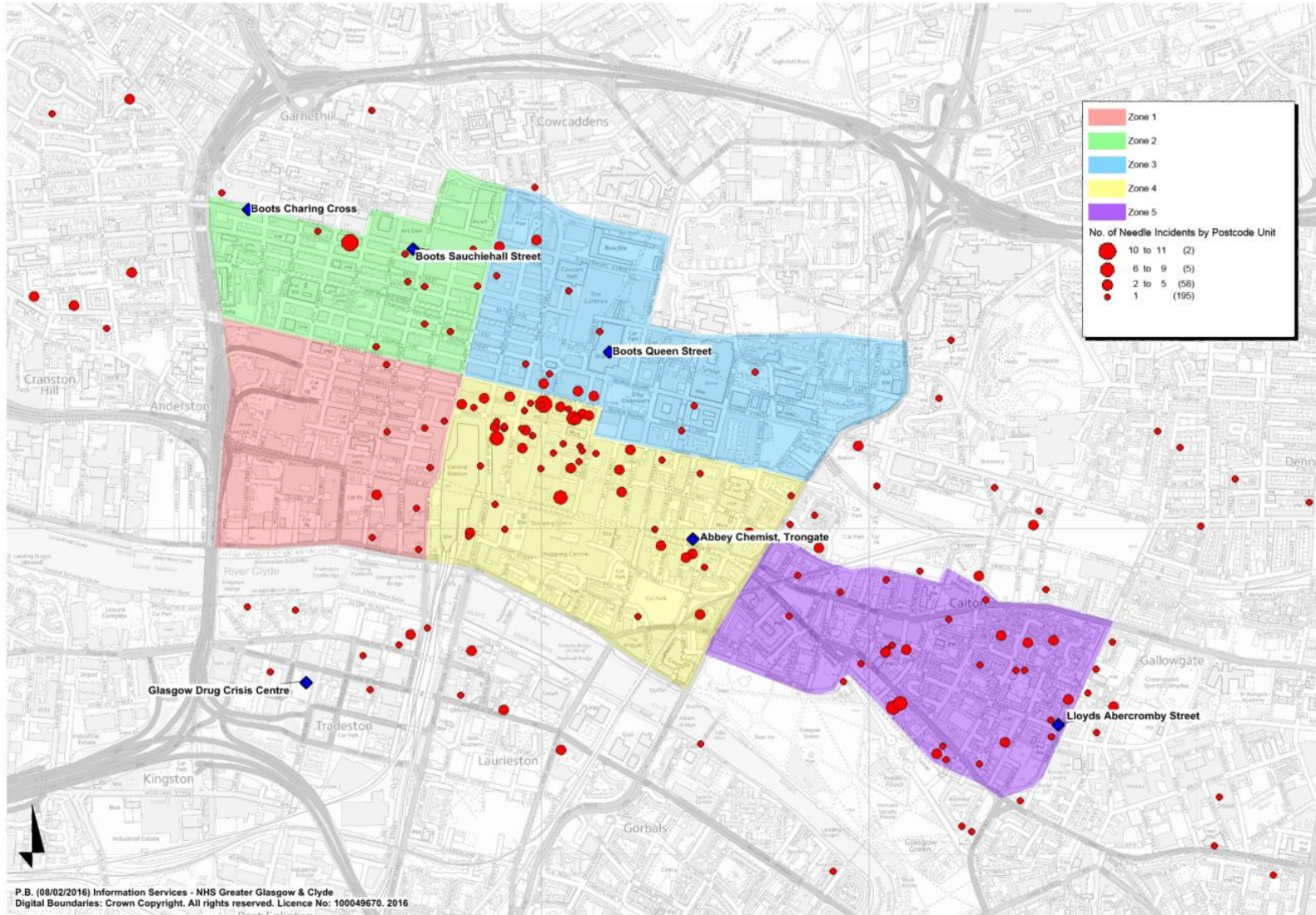
“Desperation.”

“I had to go down below a bridge to inject with other using addicts, as a result of if I get caught doing it in the hostel, I would have been papped out.”



Locations

Reports of drug-related litter, GCC 2015



Report recommendations

Service development

1. Inter-sectoral co-ordination
2. Peer support network
3. Meeting the specific needs of this population
4. Injecting equipment provision

Report recommendations

Service development

5. **Safer injecting facilities**
6. **Heroin-assisted treatment**
7. Improving data collection

Growing professional consensus



thebmj

BMJ 2016;354:i5259 doi: 10.1136/bmj.i5259 (Published 17 October 2016) Page 1 of 2

EDITORIALS

 CrossMark
click for updates

Drug related deaths in England and Wales
A public health and primary care emergency

John Middleton *president*¹, Sara McGrail *independent health policy specialist*², Ken Stringer *independent consultant in substance misuse*²

¹Faculty of Public Health, London NW1 4LB, UK; ²Telford, Shropshire, UK

aths in the UK

December 2016

Safer consumption facilities

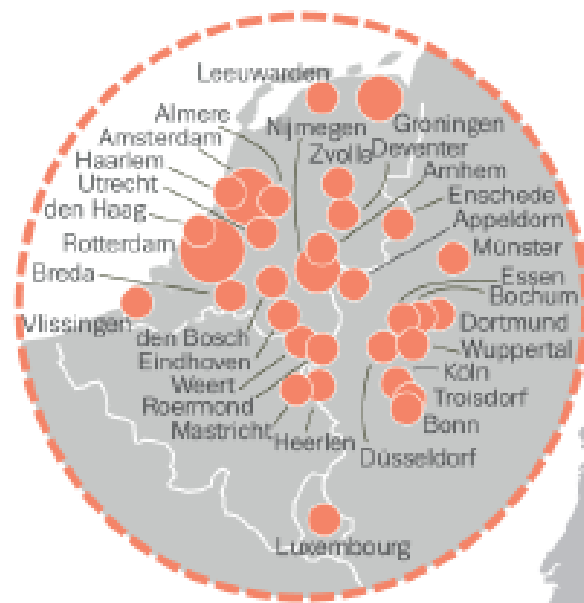
Hygienic environments where illicit drugs (purchased off the premises) can be consumed under clinical supervision

- Sterile injecting equipment
- Advice on injecting technique
- Overdose assistance
- On-site health & social services



geographical spread of DCRs in 8 countries

Number of facilities



SIFs- evidence base:

- Engage target population
- Reduce sharing of injecting equipment
- Reduce public injecting
- Reduce drug-related litter
- Help people engage with addictions and other health services
- Reduce Drug related deaths
- Reduce BBV transmission
- Cost-savings in Australia and Canada

SIFs- evidence base:

- No impact on crime or disorder
- No “Honeypot” effect
- Public acceptability over time

Update SDCF:



Update SDCF:



News > UK > UK Politics

Tories pile pressure on Theresa May to allow safe injection room for drug users

Exclusive: Demand comes after concerns raised by the National Aids Trust regarding HIV infection rates in Glasgow

Ashley Cowburn Political Correspondent | @ashcowburn |
Sunday 5 August 2018 17:38 | |



 Like Click to follow
Indy Politics



The end

