



PHINS

Health & well-being related information projects: general update

Diane Stockton
ISD ScotPHO team

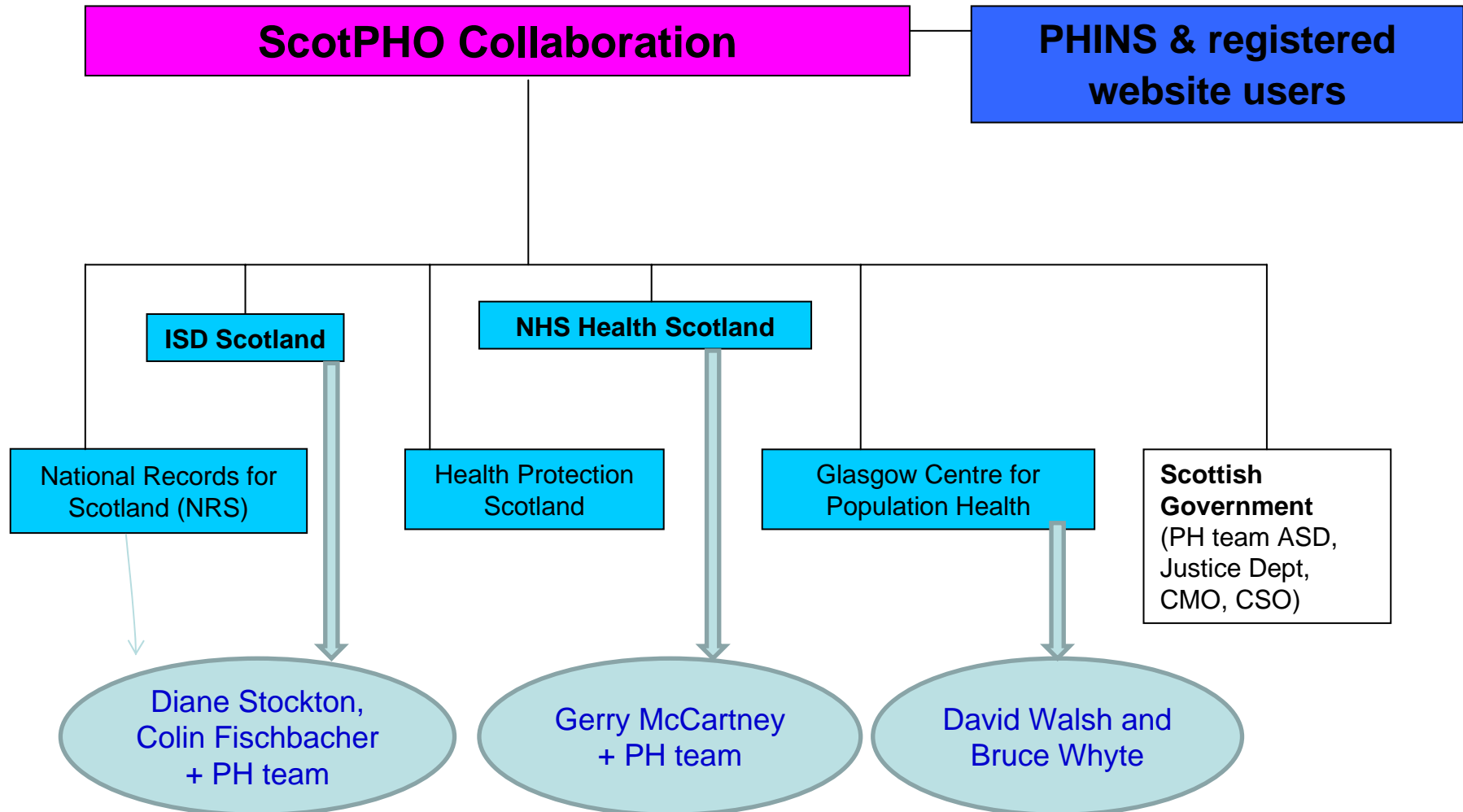
Hashtag: #PHINS14

PHINS



- Public Health Information Network for Scotland
- Established 2001
- Aim: to keep professionals up to date with national/local developments in sphere of public health ‘information’... and research
- Part of the Scottish Public Health Observatory (ScotPHO)

Who are ScotPHO?



ISD



- Alcohol
 - Alcohol profiles (ongoing), ABI reporting (June), hospital discharges (October), web pages
- Drugs
 - Drug profiles (ongoing), SDMD report (December), Drug related deaths (March), Naloxone (October), IEP (February), linkage work, drug prevalence estimates (December), web pages
- Tobacco use
 - Smoking cessation report (May), Ready Reckoner (December), Tobacco profiles (December)

ISD



- Mental health

- Suicide web pages (August), Scottish suicide information database report (April), psychiatric hospital discharges interim report (July)

- Other

- Profiles for older people (65+, 75+, 85+ published), general health and wellbeing (LA and NHS Board published; local geographies to be published in May), dental and oral health (?), enhancements to online tool incl. thematic mapping (by May)
- Healthy life expectancy estimates updated (December)
- ScotPHO website updates (quarterly)
- Training courses (available on request)
- Burden of disease study for Scotland – 2 year project with publication of main report due summer 2015. Will include detailed YLL report, DALYs for selected diseases, risk factor analyses and disease projections
- Wide range of other Public Health topics on ISD website

NHS Health Scotland



- Alcohol evaluation
 - Annual alcohol policy impact report (MESAS) (December 2014)
 - Report on attitudes to alcohol from Scottish Social Attitudes Survey (published in June 2014)
 - Report looking at alcohol sales and alcohol-related mortality across GB regions (interim report available, fuller analysis and journal paper soon)
 - Report and journal paper looking at the impact of the ban on quantity discounting on alcohol sales (fuller analysis incl. health outcomes soon)
- National evaluation of the impact of Keep Well published August 2014
- Welfare and economic downturn
 - Monitoring the impact of welfare changes and economic downturn (baseline report published December 2013, update due summer 2015)
 - Several journal papers and a report looking at the availability and distribution of work

NHS Health Scotland



- Mental health indicators
 - National children's data report published December 2013
 - Options appraisal for future reporting underway
- 'Informing Investment for Inequalities' (III) report and tools for modelling the health and health inequality impacts of 14 interventions (for Scotland, boards and CPPs) will be published in November
- New ScotPHO pages on rurality and for an increasing range of equality groups
- Calculation of the Population Attributable Fractions (PAFs) for a range of socio-economic and behavioural exposures as part of the Burden of Disease study
- Creation of a Place Standard for Scotland (due Summer 2015)
- Health inequalities Policy Review, outlining the evidence for action to reduce health inequalities, is now published

GCPH



- Local health profiles for Glasgow published in June.
 - Sixty profiles, covering: Glasgow as a whole; the three sub-sectors of Glasgow's Community Health Partnership (North East, North West and South); fifty-six neighbourhoods across the city.
 - 27 indicators: population; cultural factors; environment and transport; socio-economic factors; education; poverty; and, health.
 - <http://www.understandingglasgow.com/profiles>
- Update the synthesis of evidence around, and plausible explanations for, Scotland's high levels of excess mortality: looking to publish in summer 2015
 - to support this 'synthesis' work, a number of new short-term projects looking at potential Scottish-English differences in e.g. housing quality, labour market, diet, scale of urban change and 'vulnerability' have been commissioned (reports due in spring 2015)

GCPH

Forthcoming publications



- An analysis of changes in housing, demography and health in Glasgow over the last 15 years (late autumn).
- A new film in the Understanding Glasgow series, 'Going it alone', focussing on one woman's experiences of becoming a lone parent (late October).
- A qualitative study, focussing on users assessments of the new Connect2 cycling and walking infrastructure (December 2014).
- A detailed analysis of trends in cycling and pedestrian casualties at a national and local level (early 2015).

NRS



- Revised population estimates for years 2002-2011 rebased on 2011 Census results
 - Available for the following geographies: Scotland, NHS Board, Council Area and Small Area Population Estimates
- NHS Board population estimates for years 1981-2013 based on 1st April 2014 NHS Board boundaries
- Planned releases of census data continue
<http://www.scotlandscensus.gov.uk/>

SG – Office Chief Statistician

- NHS Board boundaries were changed on 1st April 2014 to align with those of local authorities
- Data Zone boundaries are currently being redrawn, with new ‘2011 Data Zones’ being available in late 2014 – no release date confirmed as yet
- SIMD 2015 will be released in 2015, and will be calculated for new ‘2011 Data Zones’ – no release date confirmed as yet

SG –Public Health Team



- The Scottish Health Survey 2013 report (2nd December).
- The Scottish Household Survey 2013 report (August).
- The SALSUS report (November).
- New smoking cessation HEAT target.
- Scottish Health Survey topic report on mental wellbeing – using data from the 2012 and 2013 Scottish Health Surveys (by end of the year).
- Publication on unpaid carers using Census and survey data (2015).

European standard population

- The European Standard Population changed from original ESP1976 to ESP2013

Finally...

- Local projects bulletin (soon)
- ScotPHO update bulletin (November)
- Weekly public health news alerts
- Evaluation email – please reply

Register for updates from the ScotPHO homepage:

www.scotpho.org.uk

Hashtag: #PHINS14